

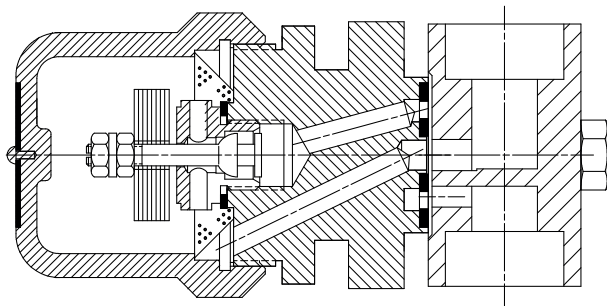


AB-3000 Bimetallic Steam Trap

Stainless Steel

For Pressures to 22 bar...Capacities to 1 800 kg/h

Steam Trapping and
Steam Tracing Equipment



Description

Armstrong's AB-3000 Bimetallic Steam Trap operates by the effect that rising temperature has on bimetallic elements. It adjusts itself to changing conditions, as the increasing pressure on the valve is compensated by the curving of the bimetallic elements caused by the increasing temperature.

Armstrong's AB-3000 has a sealed, stainless steel body that is lightweight, compact and highly resistant to corrosion. The AB-3000 is repairable (body and cap can be unscrewed). It is piped through the Armstrong 360° Universal Connector or Trap Valve Station (TVS). This makes it easy to install and replace, as the trap can be removed while the connector remains in-line. The result is savings in labor cost and increasing in flexibility, as other trap types (Inverted Bucket, Thermostatic and Thermodynamic) can be installed on the same connector.

Maximum operating conditions

Maximum allowable pressure (vessel design): 28 bar @ 343°C
Maximum operating pressure: 22 bar
Maximum back pressure: 99% of inlet pressure

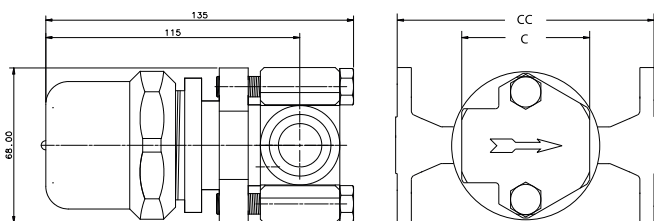
Connections

Screwed BSPT and NPT
Socketweld
Flanged DIN or ANSI (welded)

Table ST-190-1. Model AB-3000 Trap (dimensions in mm)

Pipe Connections	15 – 20 – 25
"C" Face-to-Face (screwed & SW)	60 – 60 – N/A
"CC" Face-to-Face (flanged PN40*)	150 – 150 – 160
Weight in kg (screwed & SW)	1,9
Weight in kg (flanged PN40*)	4,3 – 4,5 – 4,7

* Standard flanges are in carbon steel, stainless steel flanges are optional. Other flange sizes, ratings and face-to-face dimensions are available on request. All sizes comply with the Article 4.3 of the PED (2014/68/UE).



† May be derated depending on flange rating and type.

Materials

Body: ASTM - A240 304L
Standard connector: Stainless steel – 304
Valve: Chrome steel – 440F
Seat: 303 Stainless steel
Elements: Nickel plated
Strainer: 304 Stainless steel

Specification

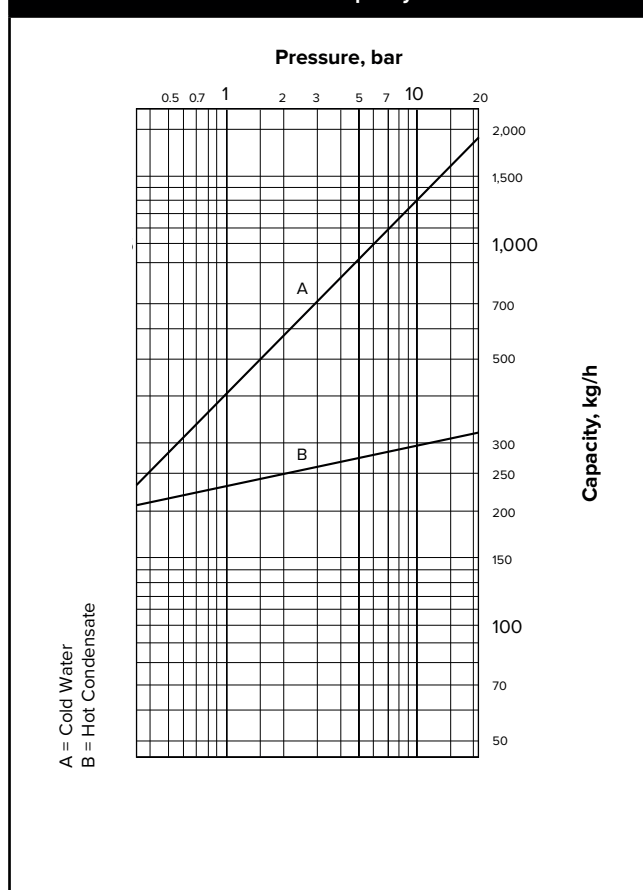
Bimetallic repairable steam trap, type AB-3000 in stainless steel, with integral strainer. Piped through 360° Universal Connector or Trap Valve Station (TVS). Maximum allowable back pressure 99% of inlet pressure.

How to order

Specify:

- Size and type of pipe connection.
- Maximum working pressure that will be encountered
- Maximum condensate load

Table ST-190-2. Model AB-3000 Capacity



All dimensions and weights are approximate. Use certified print for exact dimensions. Design and materials are subject to change without notice.